



D&H Machinery, Inc.

FALL 2011 EQUIPMENT CATALOG

See us at
Fabtech
Chicago
Booth #613
November 14-17,
2011



Our Office – Phillips Avenue, Toledo, Ohio

We are a complete, full service machinery dealer, providing NEW and USED Steel Processing Equipment to your requirements and shipped to any part of the world.

Our new equipment comes from several sources in North America and Europe. If you do not see what you're looking for in our catalog, call us and we can locate what you require.

D&H Machinery, Inc. can also assist in liquidating or auctioning entire plants. Please call for details.



Our Warehouse – 20,000 square foot heated facility with 20 ton crane, located at 1745 Commerce, Holland, Ohio

**723 Phillips Ave., Bldg. D2 • Toledo, Ohio 43612
(419) 841-3586 • Fax: (419) 841-2986**

E-Mail: sales@dnhmachinery.com • www.dnhmachinery.com

John Decator: Cell 419-215-3387 • john@dnhmachinery.com
Jim Clark: Cell 419-699-0367 • jim@dnhmachinery.com

STEEL PROCESSING EQUIPMENT



40,000 x 60" PRO ECO COIL CAR #8849



36" x .125 x 30,000# RED BUD CTL #8788



60" x .105" HERR VOSS MULTI-BLANK #7529



REF#

BANDING LINES

| | |
|-------|--|
| #7980 | 6,000# x 54" SIGNODE BANDING TABLE |
| #5998 | 6,000# x 60" RANGER/SIGNODE BANDING LINE |
| #5967 | 6,000# x 60" SIGNODE BANDING TABLE & HEAD |
| #8435 | 6,000# x 60" SIGNODE / ROYALTON BANDING LINE |
| #5238 | 10,000# x 72" EMAG OD GRAB AUTOMATIC STACKER |
| #8679 | 10,000# x 72" RANGER BANDING LINE |
| #8132 | 20,000# x 72" LOOPCO BANDING LINE |

COIL CARS

| | |
|-------|--|
| #8980 | 10,000# x 48" BRANER COIL CAR/TIPPER |
| #8948 | 10,000# x 60" REVOLVATOR, FLOOR TYPE |
| #8977 | 20,000# x 48" SOUTHWORTH, FLOOR TYPE |
| #8801 | 25,000# x 48" LOOPCO, FLOOR TYPE |
| #8849 | 40,000# x 60" PRO ECO, EXIT TYPE (see photo) |
| #8993 | 56,000# x 72" LOOPCO, FLOOR TYPE |

**** We Build New
40,000# - 60,000#
Coil Cars. Call
for a Quotation!**

COIL & SHEET LIFTERS

| | |
|-------|----------------------------------|
| #8683 | 4,000# CADY PALLET LIFTER |
| #6662 | 4,000# x 36" AUTOQUIP LIFT TABLE |
| #8657 | 8,000# x 13" HEPPANSTALL C-HOOK |
| #8685 | 10,000# CALDWELL COIL I.D. LIFT |
| #8814 | 10,000# MANSAYER COIL I.D LIFT |
| #6848 | 12,000# x 24" CUSTOM C-HOOK |
| #6849 | 12,000# x 24" CUSTOM C-HOOK |
| #8253 | 15,000# C-HOOK |
| #8251 | 20,000# CADY C-HOOK |
| #8815 | 20,000# MANSAYER COIL I.D. LIFT |
| #8656 | 24,000# x 36" HEPPANSTALL C-HOOK |
| #1733 | 30,000# HEPPENSTALL COIL GRAB |

**DISTRIBUTOR
FOR NEW, CALL
FOR A QUOTE**

CUT TO LENGTH LINES

| | | | |
|-------|------------|-------------|------------------------------------|
| #8788 | RED BUD | 36" x .125" | 30,000# (VOSS LEVELER) (photo) |
| #6278 | ENGEL | 48" x .060" | |
| #8961 | ROWE/MCKAY | 48" x .075" | 20,000# |
| #7123 | MCKAY | 48" x .105" | 20,000# |
| #8777 | ROWE/VOSS | 48" x .105" | 30,000# |
| #7800 | AMERICAN | 48" x .250" | 10,000# |
| #6200 | IOWA PREC. | 60" x .060" | 10,000# (DUCT LINE) |
| #7529 | HERR VOSS | 60" x .105" | 40,000# (MULTI BLANK LINE) (photo) |
| #7598 | DELTA | 60" x .125" | 30,000# (6 HI LEVELER) |
| #7144 | RED BUD | 72" x .135" | (MULTI BLANK) |
| #5792 | RED BUD | 72" x .135" | 20,000# |

DOWNLAYERS

| | |
|-------|-----------------------|
| #5781 | 3,000# x 60" MATTHEWS |
| #7450 | 6,000# x 60" WEAN |
| #6016 | 6,000# x 60" RANGER |
| #5890 | 8,000# x 64" LOOPCO |
| #8004 | 10,000# x 72" BRANER |
| #9025 | 20,000# x 72" LOOPCO |

EDGING LINES / EDGE TRIMMERS

| | |
|-------|---|
| #5051 | 4" x .062" - COIL PRO, HIGH SPEED SKIVING LINE, NON-FERROUS |
| #8250 | 72" x .100" PROGRESSIVE EDGE TRIMMER |
| #6138 | 72" x .280" WEAN DOUBLE STUB EDGE TRIMMER |
| #8924 | 76" x .375 PRO ECO DOUBLE STUB EDGE TRIMMER |

REF# LEVELERS/STRAIGHTENERS/FLATTENERS

- #5658 14" x .100" KOHLER, 21 ROLLS, 4 HI
- #6031 18" x .050" LITTELL, 5 ROLLS, 4.25" DIA. ROLLS
- #8723 36" x .039" VOSS, 19 ROLLS, .875" DIA. ROLLS
- #7490 48" x .040" LITTELL, 7 WORK ROLLS
- #8078 48" x .187" LENNOX, 17 ROLLS, 2.50" DIA., 100 HP
- #8962 60" x .060" PRO ECO. KORFLEX, 7 ROLLS, 1.75" DIA. (see photo)
- #8783 72" x .065" VOSS/UNGERER, 17 ROLLS, 1.846" DIA.
- #5833 72" x .375" CAUFFIEL, 7 ROLLS, 8" DIA., 75 HP
- #8922 76" x .375" BRADBURY AUTO-CORRECT, 11 ROLLS, 4" DIA.

MISCELLANEOUS

- #4440 ALUMINUM FOIL ROLLING PLANT, 36" WIDE FINISHED PRODUCT
- #8719 BALER, LOGMAN
- #3448 BARREL PRODUCTION PLANT - 200/230 L.
- #1793 BELT WRAPPER, P.M. - UNDER WRAP (1996) (NEW, NEVER USED)
- #7695 BENDER, PINES
- #8642 BENDER, TUBE, CARRIER
- #7766 BENDER, TUBE, DIACRO
- #7767 BENDER, TUBE, DIACRO
- #8020 BENDER, TUBE, DIACRO, MODEL 6
- #8771 BENDING ROLL, HAEUSLER
- #8949 BRIDLE ROLL, CUSTOM, 14" WIDE
- #8943 BRIDLE STAND, CUSTOM, 16" WIDE
- #6261 CHILLER, WATER-COOLED, KELVI-PLAST
- #8555 COATER, GFG, 60" WIDE
- #8218 COIL END JOINER, GUILD, 6.5" x 0.020"
- #6503 CONVEYOR, BRANER TRANSFER, 15,000# x 84"
- #8908 CONVEYOR, PRO ECO, 10,000# x 66"
- #5997 CONVEYOR, 10,000" x 72" CAP., 20' LONG
- #8941 CORE CUTTER, CORETECH (see photo)
- #8963 CORRUGATOR, TUBE, D & W
- #6889 C-T-L LINE COMPONENTS, CINCINNATI, 72" WIDE x .135"
- #8364 DC MOTOR, RELIANCE
- #8920 DIE, FIN, OAK
- #5845 DIE HANDLER, HANSFORD, MODEL 1020
- #8978 EMBOSSING ROLLS, MEMCO
- #8817 FIN DIE, BURR OAK
- #1677 FOIL PRODUCTION LINE, LUDWIG BRUCHER
- #1704 FOIL PRODUCTION LINE, SHOWA
- #8285 FORKLIFT, HYSTER, 14,700#
- #8327 GEAR REDUCER, FALK
- #2053 GRINDING LINE, COIL TO COIL, 24" WIDE STAINLESS
- #8366 HYD. POWER UNIT, PARK
- #8713 HYDRAULIC POWER UNITS
- #8681 HYDRAULIC POWER UNIT, 10 HP
- #8914 MACHINING CENTER, VERTICAL SUPERMAX (see photo)
- #7929 MOTOR, MILL, DC, GENERAL ELECTRIC, 1300 HP
- #7486 PAPER WINDER, ADS
- #8444 PEELER/HOLDDOWN, LEE WILSON, 52" x .250"
- #8971 PEELER/HOLDDOWN, LOOPCO
- #8644 PEELER ROLLS, AUTOMATIC FEED, 72" WIDE
- #8889 PEELER TABLE, STAMCO, 48" x .135"
- #7511 PINCH ROLLS, MACHINE CONCEPTS, 64" WIDE
- #8921 PRESS LINE, OAK, 60 TON



STEEL PROCESSING EQUIPMENT (Cont.)



60" PRO ECO KORFLEX LEVELER #8962



CORE CUTTER, CORTECH #8941



VERTICAL MACHINING CENTER, SUPERMAX #8914



STEEL PROCESSING EQUIPMENT (Cont.)



25" x 25" HEM BAND SAW 1995 #8757



48" NOVA TENSION STAND #8883



**500 TON
MINSTER PRESS
#9006**



REF#

MISCELLANEOUS

| | |
|---------|---|
| #8216 | ROLL COATER, BLACK BROTHERS, 44" WIDE |
| #7337 | ROLL FEED, STRILICH, 60" x .090" |
| #1655-P | ROLL FEED, *BLISS, 72" WIDE |
| #8757 | SAW, BAND, HEM 25" x 25", 1995 (see photo) |
| #8890 | SLITTER ENTRY UNIT, PRECISION STRIP, 48" WIDE |
| #7700 | SLITTER KNIVES, ASCO, 8" I.D. |
| #7757 | STACKER TABLE, FOR BANDING LINE |
| #6916 | STRAIGHTENER, TUBE, MAC HEMP |
| #8304 | SWEEPER, FLOOR, MINUTEMAN |
| #8722 | TENSION STAND, HERR VOSS, 40" WIDE |
| #8893 | TENSION STAND, NOVA, 48" WIDE (see photo) |
| #8955 | TUBE BENDER, MIIC CHUO |
| #8957 | TUBE EXPANDER, MTD |
| #6540 | TURKS HEADS, DEMAG |
| #8365 | WATER COOLER, CUSTOM |
| #8218 | WELDER, SHEAR END, GUILD |
| #8231 | WIRE DRAWING BLOCK, CUSTOM |

MOTORS / REDUCERS

| | |
|-------|--|
| #0184 | H/S PARALLEL REDUCER, 4.70:1, 72 HP |
| #3550 | HORSBURG/SCOTT PARALLEL REDUCER, 248:1 |
| #3552 | HORSBURG/SCOTT R.A. REDUCER, 258:1 |
| #0309 | MOTOR, DC, WESTINGHOUSE, 75 HP, 200-1200 RPM |
| #7929 | MOTOR, MILL DUTY DC, 1000 HP, 680-1200 RPM |

PRESS - CUT OFF

| | |
|-------|---|
| #7680 | 15 TON, PRESS CUTOFF, TISHKEN |
| #7076 | 20 TON, BTM AIR TOGGLE PRESSES |
| #7568 | 20 TON, PRESS, CUTOFF, BTM |
| #7640 | 25 TON, PRESS, CUTOFF, ARDCOR |
| #7706 | 25 TON, PRESS, HYD, NEFF |
| #6776 | 40 TON, PRESS, CUTOFF, B & K |
| #6777 | 40 TON, PRESS, CUTOFF, B & K |
| #5978 | 75 TON, PRESS CUTOFF, ARDCOR, 4 POST, 4" STROKE |
| #7667 | 75 TON, PRESS CUTOFF, MCKAY, |
| #6936 | 80 TON, PRESS, CUTOFF, PNEU-POWER |
| #2716 | 125 TON, PRESS CUTOFF, METFORM, 4 POST |
| #8373 | 150 TON, PRESS CUTOFF |
| #8373 | 150 TON, PRESS, CUTOFF, ALPHA |
| #7674 | 150 TON, PRESS, CUTOFF, B & K |

PRESS - BRAKES, SSDC / OBI / HYD

| | |
|-------|---|
| #7665 | 45 TON, MINSTER, OBI |
| #7642 | 55 TON, PRESS BRAKE, NIAGARA |
| #7664 | 60 TON, FEDERAL, OBI |
| #7795 | 115 TON, SCHWABE, DIE CUTTING PRESS |
| #7963 | 200 TON, ROUSSELLE, SSDC, #SS S2-200 |
| #9006 | 500 TON MINSTER, 84" x 48" BED, UNDER POWER (see photo) |

PROCESS LINES

| | |
|-------|--|
| #8803 | 1300 TON BLANKING, EMBOSSEING LINE |
| #4046 | ALUMINUM ANODIZING LINE, 60" WIDE, TERMINAL EQPT. ONLY |
| #1677 | ALUMINUM FOIL PRODUCTION LINES (2) |
| #4013 | ELECTRO GALVALIZING LINE, 48" WIDE |

REF# RECOILERS

| | |
|-------|---|
| #8946 | 10,000# x 20" CUSTOM, 10" DRUM |
| #8721 | 10,000# x 41" HERR VOSS, 20" DRUM |
| #5663 | 10,000# x 42" PAXSON |
| #8435 | 20,000# x 30" WEAN, 20" DRUM |
| #2798 | 20,000# x 42", MPM 20" DIA., SLIDE BASE, PUSHOFF |
| #8654 | 20,000# x 48" STAMCO, 20" DRUM |
| #7481 | 20,000# x 59" ADS, 16" DRUM |
| #8974 | 30,000# x 48" LOOPCO, 20" DRUM |
| #8588 | 40,000# x 60" MCKAY, 20" DRUM |
| #3620 | 50,000# x 72" NEW D&H, 20" DRUM, SLIDE BASE, IN STOCK (see photo) |
| #8912 | 60,000# x 72" PRO ECO, 300 HP DC MOTOR |

ROLL FORMERS

| | |
|-------|---|
| #7513 | 3 STAND LOCKFORMER ROLLFORMER |
| #7715 | 4 STAND, 12" RS, 2.00" SHAFT, TISHKEN |
| #7639 | 7 STAND, 8.50" RS, 1.50" SHAFT, SAMCO |
| #7679 | 8 STAND, 10" RS, 1.50" SHAFT, DAHLSTROM |
| #8624 | 10 STAND, 14" RS, 1.75" SHAFT, MAPLEWOOD (see photo) |
| #7636 | 10 STAND, 15" RS, 2.00" SHAFT, B & K |
| #7711 | 14 STAND, LOCKFORMER DUPLEX |
| #5763 | 15 STAND, 6.00" RS, 1.50" ARBORS, TISHKEN |
| #5480 | 16 STAND, 2.50" ARBORS, 36" RS, TISHKEN |
| #5293 | 16 STAND, 36" RS, 2" SHAFT, RAFTER |
| #5480 | 16 STAND, 36" RS, 2-1/2" SHAFT, TISHKEN |
| #4707 | 24 STAND, 36" RS, 1.75" SHAFT, LOCKFORMER, DUPLEX, 1988 |

ROLLING MILLS COLD - 2 HI

| | |
|-------|--|
| #2226 | ACHENBACH ALUM. BREAKDOWN, 22" x 51" |
| #3787 | ROBERTSON, 20" WIDE, 200 HP COMPLETE COIL-COIL |

ROLLING MILLS COLD - 4 HI

| | |
|-------|---|
| #1022 | ACHENBACH FOIL MILL - 38" |
| #1841 | ACHENBACH COLD MILL - 66", ALUMINUM |
| #2539 | BLISS 10" x 25" x 22" - 4 STAND |
| #1275 | HITACHI - 4 HI, STEEL - 19" x 53" x 56" |
| #2790 | M & N, 4 HI, 9" WIDE, COLD MILL |
| #6088 | RUESCH, 4 HI, 1 STAND, 18" WIDE, 1966 |

ROLLING MILLS HOT STRIP/PLATE

| | |
|-------|--|
| #2345 | SECIM (ALUM) REV. HOT MILL, 65" WIDE, RUNOUT & DOWNCOILER, INSTALLED |
|-------|--|

SCRAP CHOPPERS/WINDERS

| | |
|-------|---|
| #3769 | 1" x .075 RUESCH SCRAP WINDERS, 2,500 LB. |
| #8891 | 1" x .105" STAMCO SCRAP CHOPPERS |
| #8973 | 1" x .135 LOOPCO SCRAP WINDER |
| #8837 | 1" x .250" STRILICH SCRAP WINDER |
| #7628 | 1.50" x .500" BUTECH, 100 HP |
| #8556 | 34" x .250 PRO ECO SCRAP BALLER (see photo) |

SENDZIMIR MILLS

| | |
|-------|---------------------------------|
| #2766 | 12 HI, ZR-15-8.5" WATERBURY |
| #3423 | 12 HI, 19" WIDE WATERBURY |
| #5949 | ZR-34-12.5 WATERBURY, STAINLESS |

STEEL PROCESSING EQUIPMENT (Cont.)



50,000# x 72" NEW D&H RECOILER #3620



10 STAND MAPLEWOOD ROLL FORMER #8624



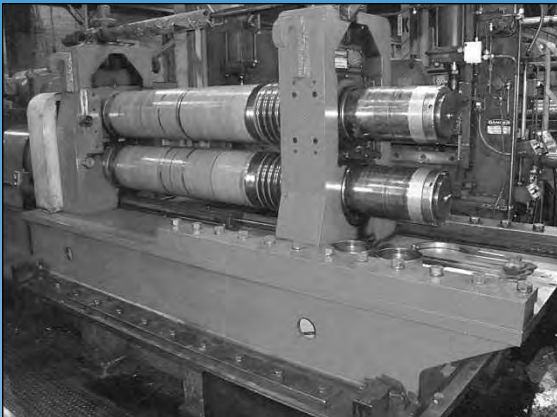
PRO ECO SCRAP BALLER #8556



STEEL PROCESSING EQUIPMENT (Cont.)



8' x .075" NIAGARA SHEAR 7727



72" x 8" CINCINNATI SLITTER HEAD #8835



60" x 7" x 40,000# PRO ECO SLITTING LINE #8952



REF#

SHEARS

| | | | |
|-------|----------------|--------------|-----------------------------|
| #1625 | WEAN | 3.6' x .060" | CHOP SHEAR |
| #8077 | CINCINNATI | 4.0' x .164" | HI-SPEED |
| #7762 | D & H | 5.0' x .250" | CROP SHEAR (IN STOCK) |
| #5493 | HERR VOSS | 5.0' x .375" | HI SPEED SHEAR |
| #4501 | PAXSON | 6.0' x .109" | HI SPEED, OVERDRIVEN |
| #8848 | CINCINNATI | 6.0' x .187" | HIGH SPEED SHEAR |
| #7745 | B & K | 6.0' x .250" | FLYING SHEAR |
| #9014 | DELTA | 6.0' x .550" | CTL SHEAR |
| #7727 | NIAGARA | 8.0' x .075" | POWER SQ. SHEAR (see photo) |
| #8884 | WYSONG & MILES | 12' x .500" | POWER SQ. SHEAR |
| #9014 | DELTA | 6.0' x .500" | CTL SHEAR |
| #9014 | ATLANTIC | 10' x .500" | POWER SQ. SHEAR |
| #9014 | CINCINNATI | 12' x .500" | POWER SQ. SHEAR |

SLITTER HEADS

We want your surplus machinery

| | | | |
|---------|------------|-------------|---------------------------|
| #5979 | WATERBURY | 10" x 2.37" | |
| #8558 | RUESCH | 12" x 1.25" | |
| #7949 | YODER | 14" x 3.00" | (SLITTER HEAD) |
| #8897 | CUSTOM | 18" x 2.87" | |
| #2417 | YODER | 24" x 4.00" | (2) SLITTER HEADS |
| #9001 | WEAN | 24" x 5.75" | |
| #0715 | YODER | 36" x 3.50" | |
| #0708 | RUESCH | 36" x 4.12" | (DRIVEN) |
| #8591 | PAXSON | 42" x 5.00" | |
| #3113-P | WEAN | 46" x 4.50" | |
| #8865 | CINCINNATI | 48" x 5.00" | |
| #6310 | WEAN | 48" x 6.00" | |
| #8972 | LOOPCO | 48" x 6.50" | |
| #6314 | MCKAY | 60" x 7.00" | |
| #8835 | CINCINNATI | 72" x 8.00" | (see photo) |
| #4545 | WEAN | 82" x 11.5" | (2) HEADS (INJECTOR TYPE) |

SLITTING LINES

| | | | |
|-------|------------|-------------|--|
| #6660 | STANAT | 8" x 2.50" | |
| #5919 | RUESCH | 12" x 2.87" | 2,000# |
| #8845 | FENN | 12" x 5.00" | (TRAVERSE WIND) |
| #8076 | STANAT | 20" x 3.00" | 5,000# |
| #8397 | WEAN | 24" x 5.75" | 24,000# |
| #8896 | STAMCO | 42" x 6.50" | 15,000# |
| #8960 | BRANER | 48" x 6.00" | 20,000# (TURRET HEAD) |
| #8405 | STAMCO | 48" x 6.25" | 20,000# (2 HEADS, TENSION STAND) |
| #6782 | LOOPCO | 48" x 6.50" | 30,000# |
| #8787 | CINCINNATI | 48" x 7.00" | 40,000# (2 HEADS) |
| #7976 | STAMCO | 48" x 7.50" | 20,000# |
| #8725 | YODER | 52" x 7.00" | 30,000# |
| #7933 | LOOPCO | 54" x 7.00" | 30,000# |
| #8720 | B & K | 56" x 5.00" | 20,000# |
| #8735 | PAXSON | 60" x 7.00" | 20,000# |
| #5001 | MCKAY | 60" x 7.00" | 40,000# |
| #8952 | PRO ECO | 60" x 7.00" | 40,000# (2 HEADS, KORFLEX) (see photo) |
| #7932 | LOOPCO | 60" x 7.50" | 44,000# |
| #8984 | PRO ECO | 60" x 9.00" | 45,000# (2 HEADS) (see photo) |
| #7489 | DELTA | 72" x 8.00" | 45,000# |
| #6287 | KOLB | 78.74" | (PLASTIC S.L.) |

TUBE MILLS

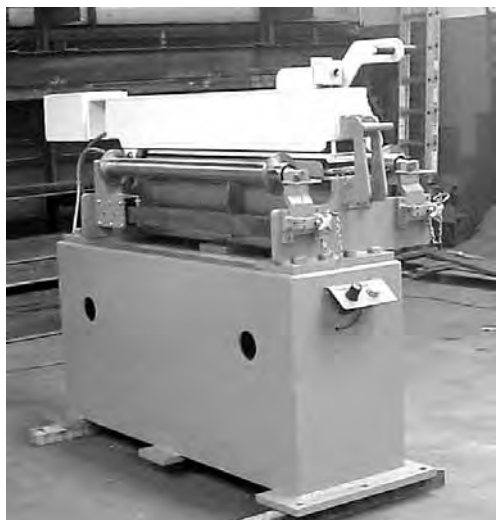
| | |
|-------|--|
| #7723 | 5.562" x .238" MCKAY TUBE MILL (see photo) |
|-------|--|

New! CROP SHEARS



36" TO 84" WIDE
.100" TO .750"
THICKNESS

Call for Pricing and Delivery!



New!

TENSION STANDS

48" TO 72" WIDE

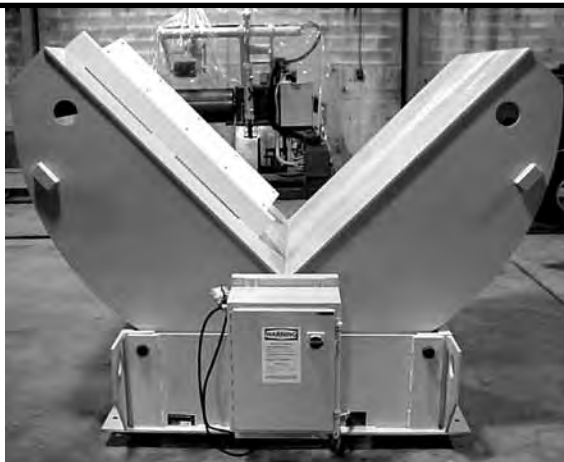
Call for
Pricing &
Delivery!

New!

COIL UPENDERS

10,000 lb.
TO 40,000 lb.
capacities

CALL FOR
PRICING & DELIVERY 20,000# x 72" NEW TIPPER #6283

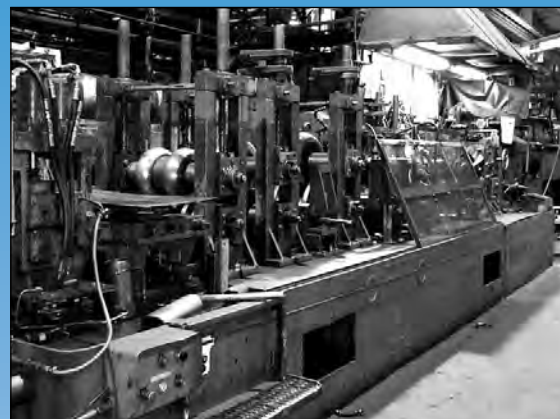


Call or FAX for NEW Equipment Pricing!

STEEL PROCESSING EQUIPMENT (Cont.)



60" x 9" x 45,000# PRO ECO SLITTING LINE #8984



5.562" x .288" MCKAY TUBE MILL #7723



15,000# x 63" LOOPCO 2 ARM TURNSTILE
#8084

D&H



D&H Machinery, Inc.
723 Phillips Avenue
Toledo, Ohio 43612



20,000# x 52" BRANER UNCOILER #8938



**20,000#
 BUSHMAN
 UPENDER
 #8987**

REF#

TURNSTILES

- #6044 2,500# x 30" WATERBURY, 2 ARM
- #8942 10,000# x 30" MAX ROLL, 1 ARM
- #8084 15,000# x 63" LOOPCO, 2 ARM 1991 (see photo)
- #8894 20,000# x 48" NOVA, 1 ARM
- #7467 20,000# x 59" CUSTOM, 2 ARM
- #8363 30,000# x 60" LOOPCO, 1 ARM
- #8589 30,000# x 60" ROYALTON, 2 ARM
- #7115 75,000# x 84" YODER, 2 ARM

UNCOILERS

- #7474 2,500# x 20" EGAN, 11.50"-14" EXP.
- #8762 4,000# x 24" LITTELL, 16"-20" EXP
- #8996 6,000# x 24" MECON DBL-END, 16"-20" EXP
- #8530 10,000# x 48" PAXSON, 26"-20" EXP.
- #9000 20,000# x 32" WEAN, 18"-22" EXP.
- #8800 20,000# x 48" LEE WILSON, 16"-22" EXP
- #8938 20,000# x 52" BRANER, 16"-20" EXP (see photo)
- #4056 20,000# x 60" IOWA PREC., DBL. END, HOLDDOWN ROLL, HYD. EXP.
- #8970 30,000# x 48" LOOPCO, 20"-24" EXP.
- #8833 40,000# x 72" CINCINNATI, 16"-24" EXP.
- #5009 50,000# x 60" NEW D&H, 19.5"-24.5 EXP., SLIDE BASE, HOLDDOWN

UPENDERS

- #8581 10,000# x 66" PRO ECO UPENDER
- #8987 20,000 BUSHMAN ROTATING UPENDERS (see photo)
- #6283 20,000# x 72" NEW TIPPER
- #8958 30,000# BUSHMAN UPENDER